

Science Knowledge Organiser

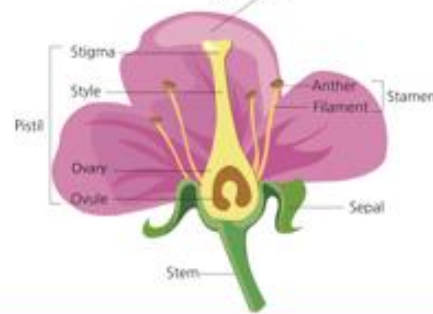
Plants

Key vocabulary

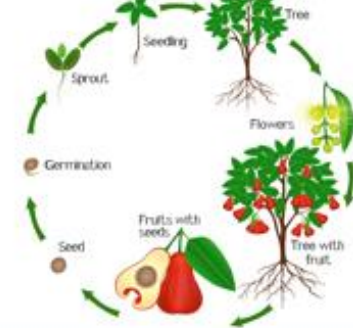
nutrients	A substance that is needed for healthy growth, development and functioning.
roots	These anchor the plant into the ground and absorb water and nutrients from the soil.
stem	This holds the plant up and carries water and nutrients from the soil to the leaves. A trunk is the stem of a tree.
flowers	These make seeds to grow into new plants. Their petals attract pollinators to the plant.
leaves	These make food for the plant using sunlight and carbon dioxide from the air.
transpiration	The process of water movement in a plant.
evaporation	When a liquid turns into a gas.

Careers connected to plants:
conservation scientist, floriculturist,
organic farmer

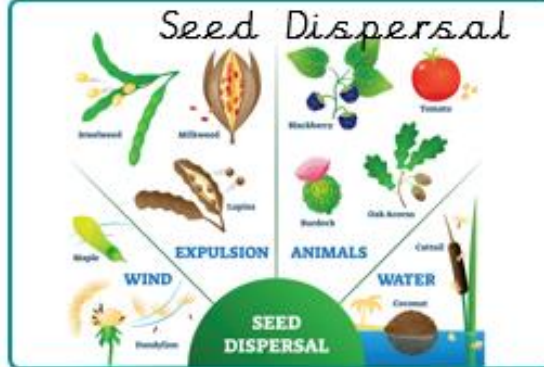
Parts of a Flower



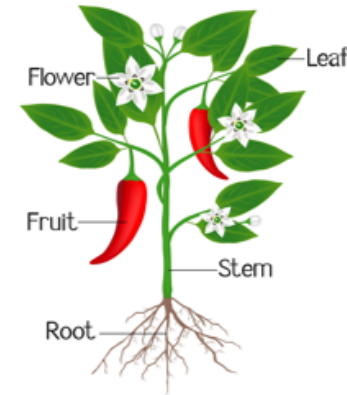
Life Cycle of a Plant



Seed Dispersal

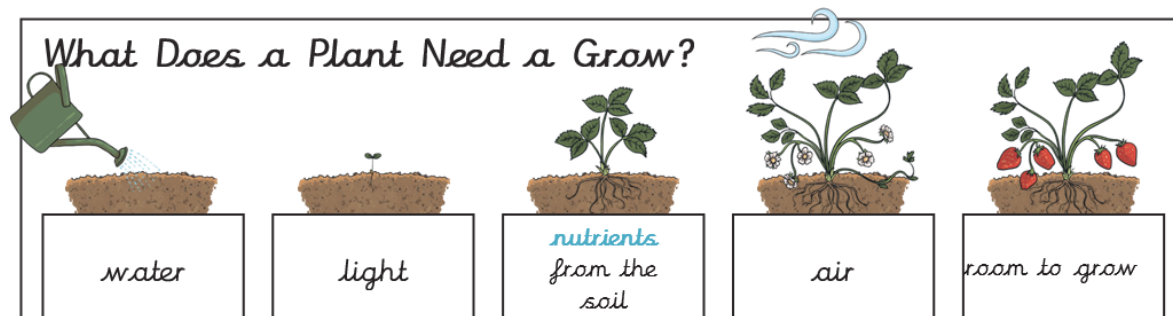


Parts of a Plant



1. The roots of a plant absorb water from the soil.
2. The stem transports water to the leaves.
3. Water evaporates from the leaves.
4. This evaporation causes more water to be sucked up the stem.
5. The fruit is the part of a flowering plant that contains the seeds.

What Does a Plant Need to Grow?



Different plants vary in how much of these things they need. For example, cacti can survive in areas with little water, whereas water lilies need to live in water.